



EVENT GUIDE

ORLANDO, FL

25/26 Anniversary Tour



Welcome To ASH!

Dear Dancers, Families, and Studios,

We're thrilled to welcome you to the 25/26 Anniversary Tour of Artists Simply Human!

At ASH, our mission is simple: to push dancers beyond technique and ignite their passion both on and off the dance floor. With a dynamic lineup of classes – including Contemporary, Hip Hop, Ballet, Jazz, Tap, Fusion, and more – our faculty brings a wealth of experience from stages and studios around the world. From Dancing with the Stars to tours with Ariana Grande, P!nk, and Janet Jackson, our educators are true leaders in the field, and they infuse every class with artistry, heart, and inspiration.

Each regional event features two exciting days of convention classes, along with our Performance Showcase – a non-competitive opportunity for dancers to share their work in a supportive environment. Dancers will receive video critiques and overall awards from the ASH faculty, making it a truly valuable and enriching performance experience.

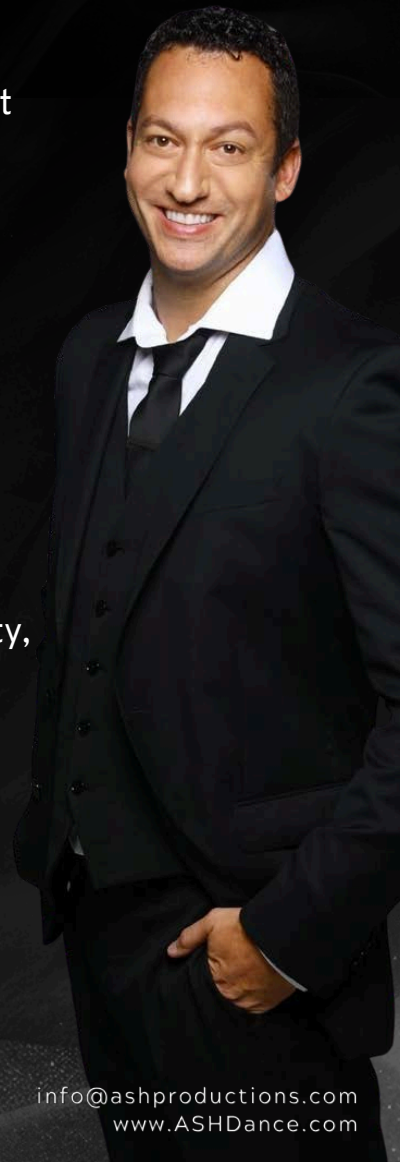
Inside this Event Guide, you'll find everything you need to know to make the most of your weekend with us. Our team is here to support you every step of the way, so don't hesitate to reach out with any questions at info@ashproductions.com.

We encourage you to read through the guide and register early – our events often sell out quickly, and we don't want you to miss out on this one-of-a-kind experience.

As we celebrate our 15th season, ASH remains deeply committed to equity, excellence, and creating safe, inclusive spaces for all. Here, dancers don't just learn steps – they discover their voice, their strength, and their community.

We can't wait to see you!

Braham Logan Crane
Director





SAVE THE DATE

REGISTRATION OPENS AUGUST 1, 2025!

ORLANDO, FL

OCT 31 - NOV 2, 2025

HILTON ORLANDO

PITTSBURGH, PA

NOV 14 - 16, 2025

**WYNDHAM GRAND
PITTSBURGH DOWNTOWN**

AUSTIN, TX

NOV 21 - 23, 2025

**HYATT REGENCY LOST
PINES RESORT AND SPA**

NASHVILLE, TN

JAN 2 - 4, 2026

**EMBASSY SUITES
MURFREESBORO**

PHILADELPHIA, PA

JAN 9 - 11, 2026

LOEWS PHILADELPHIA

BOSTON, MA

JAN 16 - 18, 2026

WESTIN BOSTON COPLEY

PROVO, UT

JAN 22 - 24, 2026

**EMBASSY SUITES
MURFREESBORO**

CHICAGO, IL #1 (JAN)

JAN 30 - FEB 1, 2026

WESTIN O'HARE

NEW BRUNSWICK, NJ

FEB 6 - 8, 2026

**HYATT REGENCY
NEW BRUNSWICK**

RESTON, VA

FEB 13 - 15, 2026

HYATT REGENCY RESTON

MYRTLE BEACH, SC

FEB 20 - 22, 2026

**SHERATON
MYRTLE BEACH**

DALLAS, TX

FEB 27 - MAR 1, 2026

**Renaissance Dallas
Richardson Hotel**

HOUSTON, TX

MAR 6 - 8, 2026

HYATT REGENCY CONROE

ATLANTA, GA

MAR 13 - 15, 2026

**RENAISSANCE ATLANTA
WAVERLY HOTEL**

NEWARK, NJ

MAR 20 - 22, 2026

**NEWARK AIRPORT
MARRIOTT**

SANTA CLARA, CA

MAR 27 - 29, 2026

SANTA CLARA MARRIOTT

GREENVILLE, SC

APR 10 - 12, 2026

**HYATT REGENCY
GREENVILLE**

CHICAGO, IL #2 (APR)

APR 17 - 19, 2026

WESTIN O'HARE

DENVER, CO

APR 24 - 26, 2026

HYATT REGENCY DENVER



NATIONALS
JUNE 30 - JULY 6, 2026



/ARTISTSSIMPLYHUMAN



/ARTISTSSIMPLYHUMAN



/ASHWORKSHOP



/ARTISTSSIMPLYHUMAN



/ARTISTSSIMPLYHUMAN

info@ashproductions.com
www.ASHDance.com

ORLANDO, FL DEADLINES



In order for ASH to successfully plan our events so that each attendee has a fantastic time, we must strictly adhere to the deadlines associated with each event. If you need an extension on any of these deadlines, please email the ASH Office at info@ashproductions before the deadline. Extensions are granted only in extenuating circumstances and on a case-by-case basis.

**OCT
3**

EARLY BIRD DISCOUNT DEADLINE

**OCT
10**

REGISTRATION DEADLINE

**OCT
17**

MUSIC & WAIVER DEADLINE

**OCT
21**

SCHEDULES RELEASED!

Please keep in mind that the number of routines that are registered dictate the schedule on Friday and Saturday. Therefore, we have no way to accurately estimate the start and end times of any portion of the event until the schedules released date.

In general, about 80% of our events sell out which means that any solos should be ready to perform as early as 7:00am on Friday of the event. We cannot accept scheduling requests for routines.



/ARTISTSSIMPLYHUMAN



/ARTISTSSIMPLYHUMAN



/ASHWORKSHOP



/ARTISTSSIMPLYHUMAN



/ARTISTSSIMPLYHUMAN

info@ashproductions.com
www.ASHDance.com

What's New?



OLD

NEW

Teachers

FREE

We have noticed that non-teachers and parents have begun to take advantage of our free teacher program and we want to continue to protect the teachers that attend ASH. Moving forward, we ask that registered teachers or administrators be verified via your studio website. Teachers will remain free as long as they are registered prior to the Registration Deadline and verified. Any teachers you register after the deadline or on-site at the event will be charged a registration fee of \$195.

Sellout Commitment Fee

N/A

ASH is proud to offer registration with no deposit required—it gives you the freedom to plan at your own pace. That said, some of our events are already on track to sell out. When those events do reach capacity, we'll ask each registered studio or independent to submit a small 5% commitment by October 15th to hang onto their spots. It's just a simple way to help ensure that our most popular events are filled with the dancers who are truly planning to be there—and that no one is left out who's ready to join us.



/ARTISTSSIMPLYHUMAN



/ARTISTSSIMPLYHUMAN



/ASHWORKSHOP



/ARTISTSSIMPLYHUMAN



/ARTISTSSIMPLYHUMAN

info@ashproductions.com
www.ASHDance.com

PRICING

CONVENTION



Levels - (Ages as of Jan. 1, 2026)

	Early Bird Rate	Regular Rate
Mini Movers (Ages 3-7) <i>(Includes one Mini Movers Observer Band)</i>	\$195	\$210
Artists in Training (Ages 7-11)	\$315	\$350
Intermediate (Ages 12-14)	\$315	\$350
Advanced (Ages 15+)	\$315	\$350
Teachers/Administrators <i>(Must be verified via studio website)</i>	FREE	\$195 <i>After Registration Deadline</i>
Observers (Available ONLY At The Event)	N/A	\$65

PERFORMANCE SHOWCASE

You must be registered for the convention in order to register routines for the Performance Showcase

# of Performers	Early Bird Rate	Regular Rate	Time Limit	Ext. Time Rate
Solo (1)	\$185	\$205	2:30 Minutes	30 Sec - \$15
Duet/Trio (2-3)	\$100/person	\$120/person	2:30 Minutes	30 Sec - \$10/person
Small Group (4-9)	\$65/person	\$85/person	3 Minutes	30 Sec - \$5/person
Large Group (10-24)	\$65/person	\$85/person	4 Minutes	30 Sec - \$5/person
Production (25+)	\$65/person	\$85/person	6 Minutes	30 Sec - \$5/person

REFUND POLICY

Unless ASH is forced to cancel due to Acts of God, CDC, local, state, or federal government mandates, ASH will not provide a refund under any circumstance. If the event is held and a dancer cannot attend due to injury or illness, you must contact the ASH Office at least 24 hours prior to the start of the event. ASH will issue a credit statement to be used up to one year from the date of issue for convention and/or performance showcase fees provided the dancer submits a doctor's note within 30 days via email to info@ashproductions.com.

SAMPLE SCHEDULE



Due to overwhelming demand in select cities, Performance Showcase may begin on Thursday

📅 Thursday

7:00am

- *In select cities* - Performance Showcase

📅 Friday

7:00am

- Registration
- Performance Showcase (7am-11pm)

6:00pm

- Open Classes
- theCOMPANY Intensive on Tour

📅 Saturday

7:00am

- Registration & Welcome Show

8:00am - 3:00pm

- Classes & Scholarship Auditions
- Teacher Lunch
- Teacher Classes
- Mini Movers Classes
- Parent Class

3:30pm - 10:30pm

- Performance Showcase

📅 Sunday

7:00am

- Closing Show Rehearsal

8:00am - 1:00pm

- Classes
- Teacher Classes
- Mini Movers Classes

1:00pm

- Closing Show

PLEASE NOTE: The official schedule for each city will be released to attendees via email by the date and time listed on the specific event page of the ASH website. ASH Faculty varies from city to city. Unfortunately, ASH cannot guarantee which faculty will be in attendance. Occasionally, advertised faculty will be replaced by an equally qualified professional.

CLASS DESCRIPTIONS

MINI Movers (3-7)

An introduction to the dance convention experience, Mini Movers includes one complimentary Observer band for Mini Movers classes only, ASH swag, and performs at the start of the Showcase on Saturday on the ASH stage!

FREE!

TEACHER ACTIVITIES

Join ASH Faculty and Colleagues for lunch and receive your free ASH teacher merch! Exciting, informative and interactive, our teacher training seminars with the ASH Faculty will leave you feeling inspired and refreshed!

COLLAB CLASS

Join the entire event Faculty for an exciting close to the weekend! Each Faculty member will teach two 8 counts and combine them together to create one fun, collaborative combination to wrap up the event!

PARENT CLASS

Parents, it's time to show off your moves! Join an ASH Faculty to show your kids exactly how Mom AND Dad get it done!



/ARTISTSSIMPLYHUMAN



/ARTISTSSIMPLYHUMAN



/ASHWORKSHOP



/ARTISTSSIMPLYHUMAN



/ARTISTSSIMPLYHUMAN

info@ashproductions.com
www.ASHDance.com

GENERAL RULES



ARRIVAL / DEPARTURE:

- Performance Showcase - If we receive a high volume of routine registrations, the **Performance Showcase may start as early as 7:00 AM on Friday, and in select cities, as early as Thursday.**
- Open Classes typically begin late Friday afternoon.
- The Closing Show usually begins around 1:00 PM on Sunday. We recommend planning for the event to conclude by 4:00 PM.

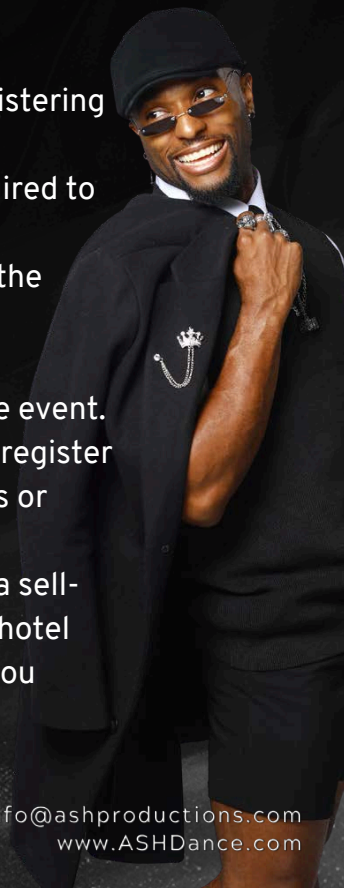
SCHEDULE:

- **Schedules** - All Event Schedules, Performance Showcase Schedules, and Welcome Packets will be released 10 calendar days prior to the event. No information will be available prior to the release of that information.
- **Open Classes** - Open Classes are open to all ages 7 and above. Open Classes begin late in the afternoon on Friday. The exact start time of the Open Classes will be available on the Event Schedule released 10 days prior to the event. **Routines scheduled during Open Classes or theCOMPANY Intensive rehearsals cannot be changed in order to attend those classes or rehearsals.**
- **Convention Classes** - The Welcome Show begins at 7:30am on Saturday and classes begin immediately after the Welcome Show ends at 8:00am.
- **Closing Show** - The Closing Show begins on Sunday afternoon. The start time of the Closing Show will be available on the Event Schedule released 10 days prior to the event.

DJ Smart, ASH Faculty and Regional Director

THINGS TO REMEMBER:

- ASH accepts registrations under a studio name as well as "Independent". When registering as an Independent, type "Independent" when asked to provide a studio name.
- In order to attend, students must be registered for the convention, but are not required to register routines for the Performance Showcase.
- Dancers that attend a studio, but are attending ASH without the studio, must have the studio complete their registration under the studio account prior to the event.
- Wristbands must be worn during all classes and cannot be transferred.
- Observers do not need to register and Observer bands can only be purchased at the event. Observers may NOT be studio owners, teachers, or dancers and are only eligible to register with participating dancers. Observers are not permitted to observe Teacher Classes or Scholarship Auditions.
- It is strongly urged that you make your hotel reservations well in advance to avoid a sell-out. Please visit the city page of the event you are attending where you will find all hotel information. If calling the hotel, please be sure to mention ASH Productions when you make your reservations to receive the discounted room rate.



CONVENTION *REQUIRED



Students must be registered for the convention in order to register routines for the Performance Showcase

LEVELS:

- There are 4 levels of convention classes:
 - Mini Movers : Ages 3-7 (2 shortened days only)
 - Artists In Training : Ages 7-11
 - Intermediate : Ages 12-14
 - Advanced : Ages 15+
- All ages are determined as of January 1st, 2026.
- Studio Owners/Directors may place their students in the level they feel is appropriate to their student's skill level, even if it is different than their age. However, if a student changes levels, they **MUST** participate in the Scholarship Audition in the level that the student was changed to. For instance, if a student moves from the Intermediate level to the Advanced level, they must audition in the Advanced level. Students ages 21 and up are not eligible to audition for scholarships.
- Each student is allowed one level change per event (if space permits) which must occur by the end of the 2nd class on the first full day of convention classes. Visit the Registration Booth or Merchandise Booth to exchange your wristband.
- At some events where convention class space is limited, ASH will adjust the Age Levels of Convention Classes in order to provide a safe dance environment. Age levels are always listed in the Welcome Packet as well as the Event Schedule when those are released 10 days prior to the event.

SCHOLARSHIP AUDITION:

- To audition for scholarships, dancers must attend the Audition Combo class and the Scholarship Audition listed on the schedule.
- **If a student changes levels, they MUST participate in the Scholarship Audition in the level that the student was changed to. For instance, if a student moves from the Intermediate level to the Advanced level, they must audition in the Advanced level.**
- Students ages 21 and up are not eligible to audition for scholarships.

THINGS TO REMEMBER:

- **While students are eligible to receive multiple scholarships if they attend multiple events, each scholarship may only be used once per season. (Example: Jane Doe attended 3 events in the same season and received the ASH Apprentice scholarship at one event, and ASH Apprentice Runner Up at each of the other two events. Only one ASH Apprentice Runner Up may be used the following season.)**
- Scholarships received in the 24/25 Season are the **ONLY** scholarships eligible for application in the 25/26 Season.
- Scholarships are calculated based on the Regular Rate, NOT the Early Bird Rate.
- Photography and Videography at ASH Productions events are **STRICTLY PROHIBITED!** Photos and Videos will be available for purchase at www.ASHPhotoVideo.com



MINI MOVERS

An introduction to the dance convention experience, Mini Movers is designed for Ages 3-7 and includes complimentary ASH swag, and one complimentary Observer band (for a parent/guardian) that can be used for Mini Movers classes only and does not grant Observer access to any other ballroom. In select cities, all Mini Movers perform at the start of the Showcase on Saturday on the ASH stage!

7 year olds can either register for the Mini Movers or Artists in Training. Studio Owners have discretion as to which age level is most appropriate for their student.



MINI MOVERS SAMPLE SCHEDULE **Not an exact schedule; subject to change**



Hannah Gossett, ASH Faculty

Saturday

Sunday

1:00 - 1:30 PM	MM Class #1	9:00 - 9:30 AM	MM Class #1
1:30 - 2:00 PM	MM Class #2	9:30 - 10:00 AM	MM Class #2
2:00 - 2:30 PM	MM Class #3	10:00 - 10:30 AM	MM Class #3
2:30 - 3:00 PM	MM Performance Showcase Rehearsal		

THECOMPANY INTENSIVE ON TOUR

Working closely with ASH Faculty Choreographers in a rehearsal setting is a valuable opportunity for growth. All registered dancers that attend the specified open class are eligible to be selected for theCOMPANY Intensive On Tour. Those selected will work with an ASH Faculty member on an original piece to be performed in the Closing Show. Please check the event schedule for exact class information. If selected, dancers must attend rehearsals on Friday evening, Saturday mid-morning and Sunday morning before convention classes begin.

All dancers chosen to perform must purchase the exclusive piece of theCOMPANY Intensive Merchandise only available to those selected for theCOMPANY Intensive piece by the Saturday rehearsal. This exclusive piece of Merchandise is available at the Merchandise Booth for \$55.

If a routine is scheduled for the Performance Showcase on Friday night during Open Classes/ theCOMPANY Intensive On Tour rehearsal, routines will NOT be rescheduled.

Teachers, Studio Representatives, and observers may NOT be in the ballroom during rehearsals.

Costumes:

- GIRLS: Please bring a pair of black leggings or sweat pants (no patterns, but ASH logos are okay) and a black top (t-shirt, tank top or crop top).
- BOYS: Please bring a pair of black sweats (no patterns, but ASH logos are okay) and a black top (t-shirt or tank top).

PERFORMANCE SHOWCASE

**Limit of 2 solos per dancer*



Performance Showcase can begin as early as 7:00 am on Friday and, in some select cities, on Thursday.

How is ASH's Performance Showcase Different From a Competition?

The Performance Showcase is an opportunity for dancers to perform their pieces in a supportive and non-competitive environment. The performances will not be adjudicated. Instead, each performance will receive a verbal critique by the ASH faculty in the registration account after the event. The ASH faculty will also choose select performances to receive awards. Awards are decided by a consensus opinion of the judges.

Things to remember:

- To participate in the Performance Showcase, dancers must be registered for the convention.
- Because the Performance Showcase is not a competition, there are no age categories or style categories. The “style” of each routine is only used for reference by our Media and Lighting teams. Because the Performance Showcase is not a competition, the “style” is not a category and will not be listed anywhere except your online registration account and seen only by our Media and Lighting teams.
- There will be strict adherence to the Performance Showcase program order. Please be ready to perform when scheduled. Keep in mind that routines which do not perform at their scheduled Performance Showcase time may be ineligible to receive Performance Showcase Awards.
- Each registered dancer may register up to 2 solos for 25/26 Season.
- Registration for the Performance Showcase is on a first come, first serve basis. Due to time restraints, once maximum capacity is reached, we will no longer accept Performance Showcase routine registrations. In select cities, studios who register after capacity has been reached may be given the option to perform some or all of their routines on Thursday.
- Dancers may perform solos and duets/trios in the Performance Showcase without a Teacher registered.
- In order to perform a group routine (4+ dancers) in the Performance Showcase, a Teacher or Studio Director must be registered for convention.
- Independent dancers may participate in the Performance Showcase.
- All routines must be appropriate for family viewing.
- Teachers may not coach dancers during performance.
- Changes to any routine must be made by the “Registration Deadline” listed on the specific city page.
- All performers must be students. No Teachers or Professional Dancers.
- If a minimum number of entries is not reached, ASH Productions reserves the right to cancel the Performance Showcase. In the event of a cancellation, ASH Productions will issue a full refund for Performance Showcase fees only.
- Awards received when a dancer is registered with a studio are not valid when registering as an independent or with another studio.

Lisette Bustamante, ASH Faculty



STUDIO CANCELLATION POLICY

Due to extraordinarily high demand, if a studio registers at least 15 students and 10 routines for an event, then alters that registration after the Early Bird Discount Deadline to fall below 15 students and 10 routines or cancels the registration entirely, the following restrictions will apply to any future registration:

- The online account will be suspended and the studio must email the ASH Office to register.
- A required 50% deposit must be made upon registration.
- Any registration must be paid in full 2 weeks prior to the Early Bird Discount Deadline.

The ASH Stage & Props:

- Props are allowed. However, you must enter the prop information when registering the routine.
- **Loading docks are not available in most cities. Props must be able to be loaded through the front entrance of the venue**
- The following items may NOT be used in routines: paint, liquid, glass, fire, live animals, confetti, powder, and glitter.
- Props may not be larger than 8 feet tall.
- **Prop setup and take down must not exceed 2 minutes for both setup and take down combined. If 2 minutes is exceeded, the routine will not be eligible for Performance Showcase Awards.**
- Props must be carried on and off the stage. ASH Staff or Crew will NOT assist in unloading, moving, assembling, repairing, or dismantling props or any other equipment.
- In most cities, ASH will provide a small area for prop storage. Please visit the registration booth when you arrive at the event to locate prop storage.
- Please leave the stage area clean for the next performers.
- Stage Dimensions – 24 feet deep x 48 feet wide. The performance stage size varies based on venue size and configuration and can range from approximately 24'x34' to 24'x48' (stage dimensions may or may not include wing space).

Music:

- **All music must be uploaded to your online registration account at least one week prior to the start of the event.**
- You can upload music by clicking the green “Media Manager” button for your event. Only MP3 files are accepted. Once uploaded, you can preview all music!
- Uploaded music must match the timestamp you entered when registering a routine. If the music exceeds the time entered and also exceeds the time limits listed in the table above, you will be charged according to the extended time rates listed in the table above for each dancer in the routine and become ineligible for Performance Showcase Awards.
- Any registration with music not uploaded at least one week prior to the start of the event will have a \$50 late fee per routine without music added to their account which must be paid for in order to pick up your registration packet at the event.
- Please bring a backup USB of all music to the event. Only a USB will be accepted. ASH will not accept music on an iPhone, iPod, computer, CD, or any other device.

The Performance Showcase is free to watch and open to all family and friends to attend FOR FREE. You may also watch the Performance Showcase LIVE at www.ASHWebcast.com.



/ARTISTSSIMPLYHUMAN



/ARTISTSSIMPLYHUMAN



/ASHWORKSHOP



/ARTISTSSIMPLYHUMAN



/ARTISTSSIMPLYHUMAN

info@ashproductions.com
www.ASHDance.com

SCHOLARSHIPS



While students are eligible to receive multiple scholarships if they attend multiple events, each scholarship may only be used once per season. (Example: Jane Doe attended 3 events in the same season and received the ASH Apprentice scholarship at one event, and ASH Apprentice Runner Up at each of the other two events. Only one ASH Apprentice Runner Up and one ASH Apprentice may be used the following season.)

ASH NATIONALS

- \$175 discount on Convention Fee at Nationals
- \$150 discount on theCompany Intensive Fee at Nationals
- Opportunity to audition for ASH The Company for the 26/27 regional tour season at Nationals 2026

ASH FACULTY PICK

- A single Half Scholarship for the 26/27 regional tour season
- Opportunity to audition for ASH The Company for the 26/27 regional tour season at Nationals 2026

ASH APPRENTICE RUNNER UP

- A single Half Scholarship for the 26/27 regional tour season
- Full Convention Scholarship for Nationals 2026
- \$150 discount on theCompany Intensive Fee at Nationals 2026
- Opportunity to audition for ASH The Company for the 26/27 regional tour season at Nationals 2026
- Opportunity to audition to become an ASH Assistant for the 26/27 regional tour season at Nationals 2026.

ASH APPRENTICE

- A single Full Scholarship for the 26/27 regional tour season
- Full Convention Scholarship for Nationals 2026
- \$150 discount on theCompany Intensive Fee at Nationals 2026
- Opportunity to audition for ASH The Company for the 26/27 regional tour season at Nationals 2026
- Opportunity to audition to become an ASH Assistant for the 26/27 regional tour season at Nationals 2026.

All scholarship discounts are based on the "Regular Rate" listed on all fee tables at www.ASHDance.com



/ARTISTSSIMPLYHUMAN



/ARTISTSSIMPLYHUMAN



/ASHWORKSHOP



/ARTISTSSIMPLYHUMAN



/ARTISTSSIMPLYHUMAN

info@ashproductions.com
www.ASHDance.com

SHOWCASE AWARDS



Routines may receive multiple awards, but each type of award voucher may only be used once per routine. (Ex. "Too Darn Hot" performed at 3 events in the same season and won 3 Choreography Picks. Only one Choreography Pick may be used the following season.)

ENTERTAINMENT PICK

\$125 Voucher for the 26/27
regional tour season

TECHNICAL EXECUTION PICK

\$125 Voucher for the 26/27
regional tour season

CHOREOGRAPHY PICK

\$125 Voucher for the 26/27
regional tour season

STANDOUT ROUTINE

\$125 Voucher for the 26/27
regional tour season

STUDIO SELECTION

\$300 Voucher for the 26/27
regional tour season

JUDGES CHOICE

\$125 (*solo/duet or trio*) or a
\$300 (*group*) voucher for the
26/27 regional tour season.

TRUE ARTIST

- FREE entrance fees (*up to \$750*) to perform the routine at the Open Competition at Nationals 2026.
- \$125 (*solo/duet or trio*) or a \$300 (*group*) voucher for the 26/27 regional tour season.
- An invitation to perform the routine in the Closing Show.



Maud Arnold, ASH Faculty



/ARTISTSSIMPLYHUMAN



/ARTISTSSIMPLYHUMAN



/ASHWORKSHOP



/ARTISTSSIMPLYHUMAN



/ARTISTSSIMPLYHUMAN

info@ashproductions.com
www.ASHDance.com

STUDIO AWARDS



STUDIO OF THE WEEKEND

The ASH Faculty will recognize a studio in the **Artists in Training** Age Division for a combination of outstanding class work, Performance Showcase routines, sportsmanship, and overall work ethic. Each Studio of the Weekend will receive a \$1,000 voucher to be used at ASH Nationals 2026.

STUDIO OF THE WEEKEND

The ASH Faculty will recognize a studio in the **Intermediate** Age Division for a combination of outstanding class work, Performance Showcase routines, sportsmanship, and overall work ethic. Each Studio of the Weekend will receive a \$1,000 voucher to be used at ASH Nationals 2026.

STUDIO OF THE WEEKEND

The ASH Faculty will recognize a studio in the **Advanced** Age Division for a combination of outstanding class work, Performance Showcase routines, sportsmanship, and overall work ethic. Each Studio of the Weekend will receive a \$1,000 voucher to be used at ASH Nationals 2026.

OVERALL STUDIO OF THE WEEKEND

The ASH Faculty will recognize a studio for a combination of outstanding class work, Performance Showcase routines, sportsmanship, and overall work ethic in all age divisions. Each Studio of the Weekend will receive a \$1,000 voucher to be used at ASH Nationals 2026.

TEACHER OF THE WEEKEND

This award is in partnership with Dance Educators Collective, of which ASH is co-producing. The ASH Director and Faculty will recognize an Educator for upholding the ideas and values of ASH. From creating camaraderie to sharing dance training that is life training, this Teacher shares integrity, passion and drive. The recipient of this award will receive full tuition to Dance Educators Collective held in Nashville, TN.

A minimum balance of \$5,000 must be registered at ASH Nationals 2026 in order to redeem the SOTW Voucher



/ARTISTSSIMPLYHUMAN



/ARTISTSSIMPLYHUMAN



/ASHWORKSHOP



/ARTISTSSIMPLYHUMAN



/ARTISTSSIMPLYHUMAN

info@ashproductions.com
www.ASHDance.com

PHOTO VIDEO STUDIO PACKAGES

All packages include all photos/video of each routine. Price is based on the regular price of \$70.00 per routine

To order a Studio Package, visit www.ASHPhotoVideo.com

10-19 Routines.....	20% Off
20-29 Routines.....	25% Off
30-39 Routines.....	30% Off
40-49 Routines.....	35% Off
50+ Routines.....	40% Off



Visit www.ASHPhotoVideo.com to purchase a photos & videos from Classes and the Performance Showcase!

ASH 15 YEARS OF ASH NATIONALS

JUNE 30 - JULY 6, 2026
JW Marriott Orlando Grande Lakes

15 years ago, when Artists Simply Human's first event was held in December of 2010, it was with the intent to bring together dancers, teachers, parents and a world-renowned faculty from around the globe for a spectacular, one time dance event. 15 years later, we tour to 20 cities each year and get to meet, teach, learn, inspire, and be inspired by dancers from across the country. We want YOU to help us kick off our 15th season, at ASH Season 15 Nationals in 2026. You are the best part of ASH, and we want the best of the best as we look to the next 15 years of ASH together.

Braham Logan Crane
Director

FEEL THE MAGIC



REGISTRATION INSTRUCTIONS



You must be registered for the full convention in order to register any routines for the Performance Showcase

#1 - visit www.ASHDance.com. Click on any of the buttons that say

Register Now



#2 - You can either create a new account or login into an existing account.

Remember that an account and a registration are not the same thing.

Tip! - If you are registering as an Independent, when creating your account, you will be asked for a Studio Name. Just put "Independent - {Your Last Name}"

to offer registration first come, first served with no deposit required—it gives you the freedom to plan at your own pace. That said, some of our events are already on track to sell out. When those events do reach capacity, we'll ask each registered studio or independent to submit a small 5% commitment by October 15th to hang onto their spots. It's just a simple way to help ensure that our most popular events are filled with the dancers who are truly planning to be there—and that no one is left out who's ready to join us. The only way to secure your spots is to fully register as soon as possible.

If you have already created an account, please login below. If you [forgot your password](#) or need to [create a new account](#), please select the appropriate button below.

[Password Recovery](#) [Create New Account](#)

Please Login

E-Mail Address * Password *

Your Email Your Password

Login

#3 - Once logged in, you can select the event you plan to attend

Braham's School of Dance

Open Registrations Start A New Registration Upcoming and Past Registrations

Have Questions or Need Help? [Email us!](#)

Some Helpful Links:

[24/25 Regional Tour Guide & Registration Instructions](#)

[Find Hotel Links, Deadlines, & Schedules](#)

[Sign/Share the Waiver](#)

ASH is proud to offer registration first come, first served with no deposit required—it gives you the freedom to plan at your own pace. That said, some of our events are already on track to sell out. When those events do reach capacity, we'll ask each registered studio or independent to submit a small 5% commitment by October 15th to hang onto their spots. It's just a simple way to help ensure that our most popular events are filled with the dancers who are truly planning to be there—and that no one is left out who's ready to join us. The only way to secure your spots is to fully register as soon as possible.

Event Name	Start Date	End Date	Actions
Orlando 25-26 Season	10/31/2025	11/02/2025	Select
Early Bird Discount Deadline - October 3, 2025			
Registration Deadline - October 10, 2025			

REGISTRATION INSTRUCTIONS

15
YEARS
OF
ASH

You must be registered for the full convention in order to register any routines for the Performance Showcase

#4 - You will then be taken to your “Roster” of students and teachers. You can select the checkbox next to the students you’d like to add to the registration from the pre-existing list of students that you’ve already created in your roster you can create new students or teachers.

Tip! - Once you've selected the checkbox next to the students who are attending, be sure to select

Add Students to Events

Orlando 25-26 Season

Return to Home Attendee List

a list of your Attendees available to add to the current event. Once an attendee is added, it will appear on your event attendees page. To edit attendee's information, simply click on their name.

Quickly Import Your Data! Click below to get started.

Import Registration from a Partner Import Students from a file

Students (35) Teachers (6) Observers (30)

Have Questions or Need Help? [Email us!](#)
You can also use the [24/25 Regional Tour Guide & Registration Instructions](#)

Add Students to Events Make Inactive Create New Students

<input type="checkbox"/>	First Name	Last Name	DOB
<input type="checkbox"/>	Braham	Crane	01/01/2009
<input type="checkbox"/>	Master	Thirteen	01/01/2009
<input type="checkbox"/>	Master	Fourteen	01/01/2009

#5 - Once you’ve added everyone attending from your roster, you will be taken to your “Attendee List”. In this step, you will ensure that each student is in the correct level under the “Attending As” column, and add any eligible scholarships.

Attending As

- ✓ Advanced
- Mini Movers
- Artists In Training
- Intermediate

First Name	Last Name	Gender	Age	Attending As	Waiver	Fee	
Bill	Quirk	Female	16	Advanced		\$315.00	Add Scholarship Delete
Braham	Crane	Male	16	Advanced		\$315.00	Add Scholarship Delete
Taylor	Kruchten	Female	16	Advanced		\$315.00	Delete
Tyler	Adcock	Male	14	Intermediate		\$315.00	Delete

Previous 1 Next

Return to Roster Proceed

Add Scholarship

Type of Scholarship

City/Season Scholarship was received

Submit

Add Scholarship

Type of Scholarship

✓ Select One:
Faculty Pick (Use in 25/26)

City/Season Scholarship was received

Provo, UT

Submit

Add Scholarship

Type of Scholarship

Faculty Pick (Use in 25/26)

City/Season Scholarship was received

Provo, UT

Submit

REGISTRATION INSTRUCTIONS

You must be registered for the full convention in order to register any routines for the Performance Showcase

#6 - Once you've checked all of your student levels and applied any eligible scholarships, click the **Proceed** button to move to the next step.

#7 - You now have **two choices**; you can add routines to the event or, if you are not planning to register any routines, you can click the **Proceed to Checkout** button. To add routines, click the **Add New Routine(s)** button.

Braham's School of Dance Routine List - Step 3
Orlando 25-26 Season

Back to Event Attendees Proceed to Checkout

Current Routines for Orlando 25-26 Season

Performance Showcase can begin as early as 7:00 am on Friday and, in some select cities, on Thursday. Scheduling requests cannot be accommodated except in extreme circumstances and only with advance notice before the Registration Deadline. Email the ASH Office with questions about Performance Showcase scheduling. By entering routines below, you are agreeing that you are aware that for Regional Events routines may be scheduled on Thursday, Friday, Saturday and Sunday.

25/26 Routine Time Limits
Solo/Duet/Trio - 2:30
Small Group - 3:00
Large Group - 4:00
Production - 6:00

Search:

Status	Name	Detail	Dancers	Age	Fee	Actions
There are no routines currently in your registration						

Print Print - No Fees

Total Routine Fees: \$0.00

Add New Routine(s) Media Manager

#8 - There are 3 required fields that you must have on the next step:

- **Routine Title**
- **Style** (Not a category—only used for reference by our Media and Lighting teams)
- **Exact Length of Music**

Style

- ✓
- Ballet
- Ballroom
- Contemporary
- Hip Hop
- Jazz
- Jazz Funk
- Lyrical
- Modern
- Musical Theatre
- Tap
- Open

Click the Import Routines button to import your routines

Import Routine Data

Return to Routine List Show All Submitted Routines Save and Add More Submit

Routine Title	Style	Options	Extended Time	Using Props	Enter/Exit Notes	Exact Length of Music
1 Routine Title				None		MM:SS
2 Routine Title				None		MM:SS
3 Routine Title				None		MM:SS
4 Routine Title				None		MM:SS
5 Routine Title				None		MM:SS
6 Routine Title				None		MM:SS

Extended Time

- ✓
- 1. Solo + 30 Sec.
- 2. Duet/Trio + 30 Sec.
- 3. Group + 30 Sec.
- 4. Solo + 60 Sec.
- 5. Duet/Trio + 60 Sec.
- 6. Group + 60 Sec.
- 7. Solo + 90 Sec.
- 8. Duet/Trio + 90 Sec.
- 9. Group + 90 Sec.
- 10. Solo + 120 Sec.
- 11. Duet/Trio + 120 Sec.
- 12. Group + 120 Sec.

Tip! - If a routine is past the time limit, you can enter that information from the **"Extended Time"** dropdown. Keep in mind that if the music you upload exceeds the time limit, you will be automatically charged the appropriate extended time rate, regardless of what you have entered here

REGISTRATION INSTRUCTIONS

You must be registered for the full convention in order to register any routines for the Performance Showcase

#9 - Once you've added all of your routines, click the **Submit button to add the dancers to each of your routines. On the next screen, you will see that next to each routine you added, you will see two options; **Add/Edit Dancers** or **Delete****

Braham's School of Dance Routine List - Step 3
Orlando 25-26 Season

1 Routines have been added

[Back to Event Attendees](#) [Proceed to Checkout](#)

Current Routines for Orlando 25-26 Season

Performance Showcase can begin as early as 7:00 am on Friday and, in some select cities, on Thursday. Scheduling requests cannot be accommodated except in extreme circumstances and only with advance notice before the Registration Deadline. [Email the ASH Office](#) with questions about Performance Showcase scheduling. By entering routines below, you are agreeing that you are aware that for Regional Events routines may be scheduled on Thursday, Friday, Saturday and Sunday.

25/26 Routine Time Limits
Solo/Duet/Trio - 2:30
Small Group - 3:00
Large Group - 4:00
Production - 6:00

Status	Name	Detail	Dancers	Age	Fee	Actions
Invalid Routine	Too Dam Hot	Jazz				Add/Edit Dancers

Reason: Please enter dancers into your routines by clicking the Add/Edit Dancers button.

[Print](#) [Print - No Fees](#)

Total Routine Fees: \$0.00

#10 - Now you can add the appropriate dancer(s) to each routine by selecting the checkbox next to their name. Once you have checked all the dancers in the routine, select the **Add Dancers to Routine button. This is also an opportunity to edit any of the routine information that you put in, including title, style, and length by selecting the **Edit Routine Information** button. Once you've added the dancer(s) to a routine and/or updated any routine information, you can select the **Back to Routine List** button.**

Routine Details

Select the checkbox next to the respective dancers name below in the "Available Dancers" list and click "Add" to register the selected dancers into the above routine.

Routine "Too Dam Hot" Details

Invalid Routine

Please enter dancers into your routines by clicking the Add/Edit Dancers button.

Category: Jazz

Group Size:

Using Props:

Exact Length of Music: 00:02:30

Extended Time:

Enter/Exit Notes:

[Back to Routine List](#)

[Edit Routine Information](#)

[Add Dancers to Routine](#)

First Name	Last Name	Type	Age	Modify
There are currently no competing dancers				
<input type="checkbox"/>	Braham	Crane	Advanced	16
<input type="checkbox"/>	Bill	Quirk	Advanced	16
<input type="checkbox"/>	Taylor	Kruchten	Advanced	16
<input type="checkbox"/>	Tyler	Adcock	Intermediate	14

REGISTRATION INSTRUCTIONS



You must be registered for the full convention in order to register any routines for the Performance Showcase

#11 - Once you have added dancer(s) to each routine and/or edited any routine information, and arrive back to your routine list, you can then select [Proceed to Checkout](#)

Braham's School of Dance Routine List - Step 3
Orlando 25-26 Season

[Back to Event Attendees](#) [Proceed to Checkout](#)

Current Routines for Orlando 25-26 Season

Performance Showcase can begin as early as 7:00 am on Friday and, in some select cities, on Thursday. Scheduling requests cannot be accommodated except in extreme circumstances and only with advance notice before the Registration Deadline. [Email the ASH Office](#) with questions about Performance Showcase scheduling. By entering routines below, you are agreeing that you are aware that for Regional Events routines may be scheduled on Thursday, Friday, Saturday and Sunday.

25/26 Routine Time Limits
Solo/Duet/Trio - 2:30
Small Group - 3:00
Large Group - 4:00
Production - 6:00

Search:

Status	Name	Detail	Dancers	Age	Fee	Actions
Too Darn Hot	Advanced Solo Jazz	1	16	\$185.00	Add/Edit Dancers Delete	

[Print](#) [Print - No Fees](#)

#12 - You'll see a summary of your registration (don't worry, a summary and invoice will be sent to you via email after you submit your registration). When you are ready, you can select [Pay and Submit](#)

Braham's School of Dance Checkout - Step 4
Orlando 25-26 Season

Please remember that you must adhere to these deadlines:
Early Bird Discount Deadline - Friday, October 3, 2025.
Registration Deadline - Last Day to Make Changes - Friday, October 10, 2025.

[Print this page](#)

Students (4) Routines (1)

Name	Age	Attended As	Waiver	Fees	Competition Fees	Total
Bill Quirk	16	Advanced		\$175.00	\$0.00	\$175.00
Braham Crane	16	Advanced		\$315.00	\$185.00	\$500.00
Taylor Kruchten	16	Advanced		\$315.00	\$0.00	\$315.00
Tyler Adcock	14	Intermediate		\$315.00	\$0.00	\$315.00

Student Total: \$1,120.00
Total After Discount: \$1,120.00

[Print](#) [Previous](#) [Next](#)

Registration Summary Explanation

- The 'Registration Summary' table includes all of totals the Students and Routines Panels.
- The Students panels detail special information about the attendees.
- The Routine Tab lists all the routine information and associated fees for each routine.

Coupon

Enter your Coupon Code... [Search](#)

Registration Summary

Student Fees	\$1,120.00
Routines Fees	\$185.00
Grand Total	\$1,305.00
Payments Received	\$0.00
Amount Due	\$1,305.00

[Back to Routine List](#) [Pay and Submit](#)

REGISTRATION INSTRUCTIONS



You must be registered for the full convention in order to register any routines for the Performance Showcase

#13 - This is your last chance to ensure that you have applied all scholarships. If you have Performance Showcase vouchers that you need to apply, you must email the ASH office **BEFORE YOU MAKE ANY PAYMENTS and request the vouchers you would like applied.**

Refund Policy

Ensure that all credits and scholarships have been applied prior to payment. No refunds will be issued for credits or scholarships not applied prior to payment. ASH cannot apply scholarships or awards to a \$0.00 balance and will not provide refunds for unused scholarships or awards. By submitting your registration, you agree to ASH's Refund Policy below. All credit statements will be issued to the registration account owner.

Payment

ASH accepts Visa, Master Card, Discover, American Express, checks or money orders. Checks or money orders must be postmarked before the Early Bird Discount Deadline in order to secure the Early Bird rate. If a check is returned, you will be assessed a \$30.00 fee. Only cash and credit cards are accepted when registering at the door or paying a final balance upon check-in at Registration. *All funds must be paid in U.S. currency only. No International, Canadian or Foreign checks will be accepted.

Refund Policy

Unless ASH is forced to cancel due to Acts of God, CDC, local, state, or federal government mandates, ASH will not provide a refund under any circumstance. If the event is held and a dancer cannot attend due to injury or illness, you must contact the ASH Office at least 24 hours prior to the start of the event. ASH will issue a credit statement to be used up to one year from the date of issue for convention and/or performance showcase fees provided the dancer submits a doctor's note within 30 days via email to info@ashproductions.com.

Do you agree to our [Refund Policy Terms & Conditions?](#) ☐

[Terms of Use](#) | [Privacy Policy](#) | [Payment Terms](#)

[Pay by Check or Cash](#) [Credit Card Payment](#)

Tip! - ASH does not charge any processing fees for using a credit/debit card. The balance you see is the balance you owe, no hidden fees. You can also make multiple payments leading up to the Early Bird Discount Deadline. When you select the Credit Card Payment option, you'll be able to select the amount you'd like to pay

CONGRATULATIONS!
You have successfully registered!

If you have any questions, feel free to contact us at 855-ASH-Dance or via email at info@ashproductions.com

Matt Smith, ASH Faculty



/ARTISTSSIMPLYHUMAN



/ARTISTSSIMPLYHUMAN



/ASHWORKSHOP



/ARTISTSSIMPLYHUMAN



/ARTISTSSIMPLYHUMAN

info@ashproductions.com
www.ASHDance.com